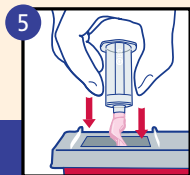
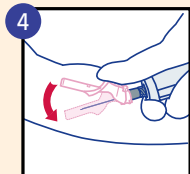
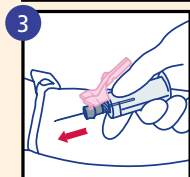
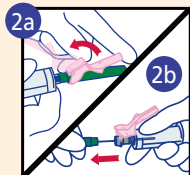
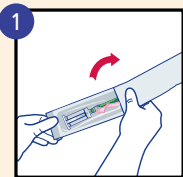


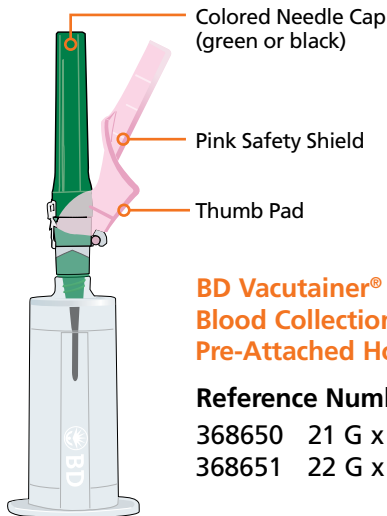
BD Vacutainer® Eclipse™ Blood Collection Needle with Pre-Attached Holder

1. Ready to use right out of the package, with no assembly required!
2. (a) Gently position pink safety shield straight back toward the holder.
(b) Twist and pull colored needle cap straight off.

Note: The needle bevel is always in position for venipuncture when the pink safety shield is facing up. **DO NOT** twist or rotate the pink safety shield.

3. Perform venipuncture according to your facility's established procedures.
4. Immediately after removing needle from vein, position thumb squarely on pink safety shield thumb pad and push pink safety shield forward to cover needle. An audible click may be heard. Lock shield into place and inspect. **DO NOT** attempt to engage safety shield by pressing against a hard surface.
5. Discard immediately into an approved sharps disposal container. **DO NOT** remove needle from holder. Dispose of the needle and holder as one unit into nearest sharps container. **DO NOT REUSE.**





**BD Vacutainer® Eclipse™
Blood Collection Needle with
Pre-Attached Holder**

Reference Numbers:

368650 21 G x 1 ¼ in.

368651 22 G x 1 ¼ in.

FOR SINGLE USE ONLY

BD Global Technical Services: 1.800.631.0174

BD Customer Service: 1.888.237.2762

www.bd.com/vacutainer

CAUTION: Handle all biologic samples and blood collection “sharps” (lancets, needles, luer adapters, and blood collection sets) according to the policies and procedures of your facility. Obtain appropriate medical attention in the event of any exposure to biologic samples (for example, through a puncture injury), since samples may transmit viral hepatitis, HIV (AIDS), or other infectious diseases. Utilize any safety-engineered feature if the blood collection device provides one. Discard all blood collection “sharps” in biohazard containers approved for their disposal.



BD Diagnostics

Preanalytical Systems

1 Becton Drive

Franklin Lakes, NJ 07417