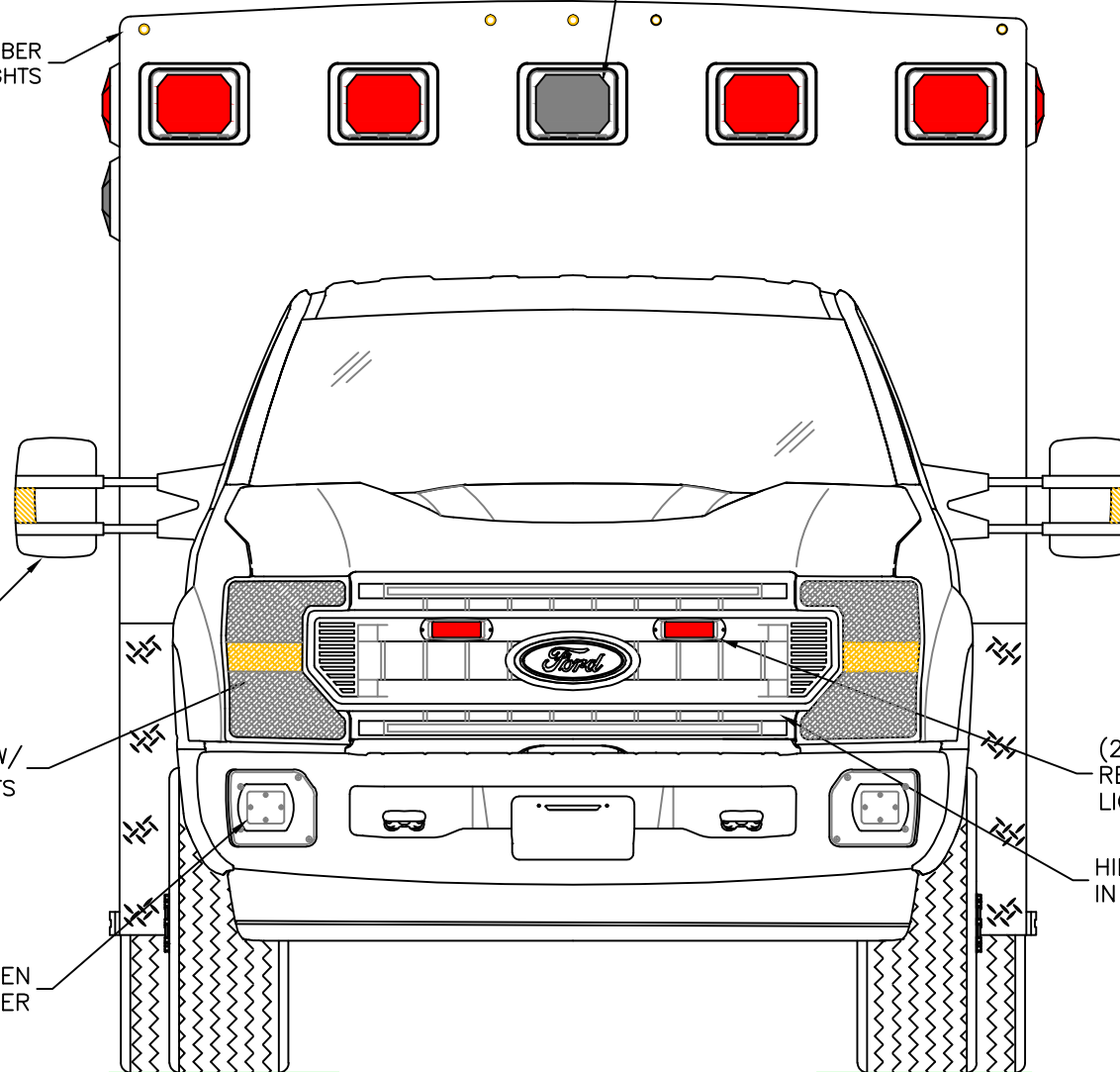


DIMENSIONS FOR OVERALL HEIGHT AND LENGTH ARE APPROXIMATE
 OVERALL HEIGHT = 109"
 OVERALL WIDTH WITH RUB
 RAILS & FENDERETTES = 95"

(5) WHELEN 900 SUPER LED WITH CLEAR LENSES
 RED / RED / WHITE / RED / RED

(5) TECNIQ S330 AMBER
 MINI-LED MARKER LIGHTS



OEM POWER
 ADJUSTABLE
 MIRRORS

FLASHING HEADLIGHTS W/
 DAYTIME RUNNING LIGHTS

CAST PRODUCTS SIREN
 SPEAKERS IN THE BUMPER

(2) WHELEN 500 SERIES
 RED SUPER LED GRILLE
 LIGHTS WITH CLEAR LENSES

HIDDEN UNLOCK SWITCH
 IN GRILLE AREA

THIS DRAWING IS FOR REPRESENTATIONAL PURPOSES ONLY. DETAILS ARE CONCEPTUAL AND ARE SUBJECT TO CHANGE DURING DESIGN AND CONSTRUCTION
 DIMENSIONS ARE APPROXIMATE UNLESS NOTED OTHERWISE TO MEET A SPECIFIC CUSTOMER NEED.

BRAUN
 EXPRESS PLUS



2020 FRONT EXTERIOR VIEW
 EXPRESS PLUS / FORD F350 CHASSIS

DATE:
 02-14-20

DWG. REV.
 AAB NR

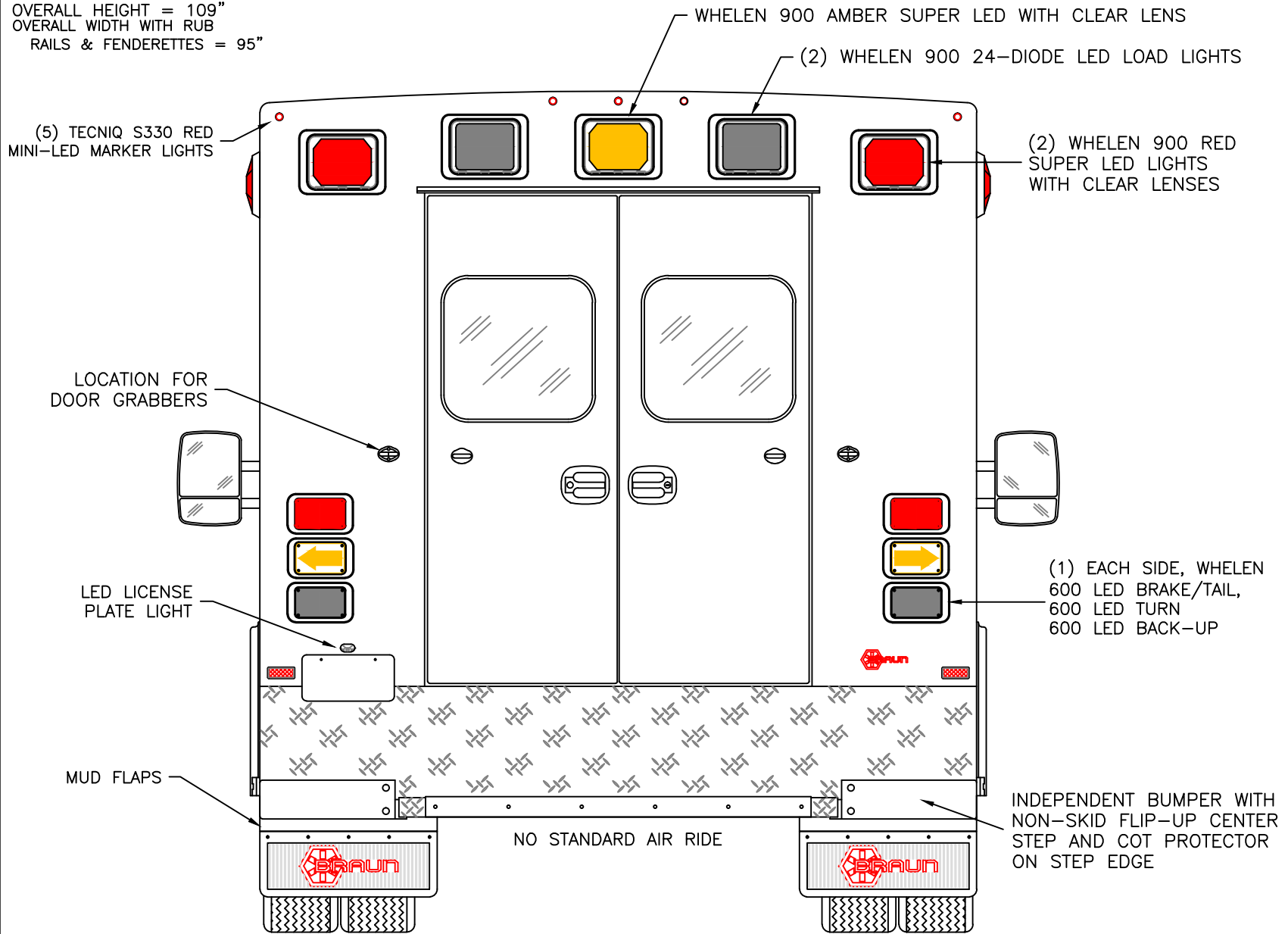
DRAWING NO.

EXPRESSPLUS-1

APPROVAL SIGNATURE:

DATE:

DIMENSIONS FOR OVERALL HEIGHT AND LENGTH ARE APPROXIMATE
 OVERALL HEIGHT = 109"
 OVERALL WIDTH WITH RUB
 RAILS & FENDERETTES = 95"



WHELEN 900 AMBER SUPER LED WITH CLEAR LENS
 (2) WHELEN 900 24-DIODE LED LOAD LIGHTS

(5) TECNIQ S330 RED MINI-LED MARKER LIGHTS

(2) WHELEN 900 RED SUPER LED LIGHTS WITH CLEAR LENSES

LOCATION FOR DOOR GRABBERS

LED LICENSE PLATE LIGHT

MUD FLAPS

(1) EACH SIDE, WHELEN 600 LED BRAKE/TAIL, 600 LED TURN 600 LED BACK-UP

INDEPENDENT BUMPER WITH NON-SKID FLIP-UP CENTER STEP AND COT PROTECTOR ON STEP EDGE

NO STANDARD AIR RIDE

THIS DRAWING IS FOR REPRESENTATIONAL PURPOSES ONLY. DETAILS ARE CONCEPTUAL AND ARE SUBJECT TO CHANGE DURING DESIGN AND CONSTRUCTION
 DIMENSIONS ARE APPROXIMATE UNLESS NOTED OTHERWISE TO MEET A SPECIFIC CUSTOMER NEED.

BRAUN
 EXPRESS PLUS



2020 REAR EXTERIOR VIEW
 EXPRESS PLUS

DATE:
 02-14-20
 DWG. AAB REV. NR

DRAWING NO.
 EXPRESSPLUS-2

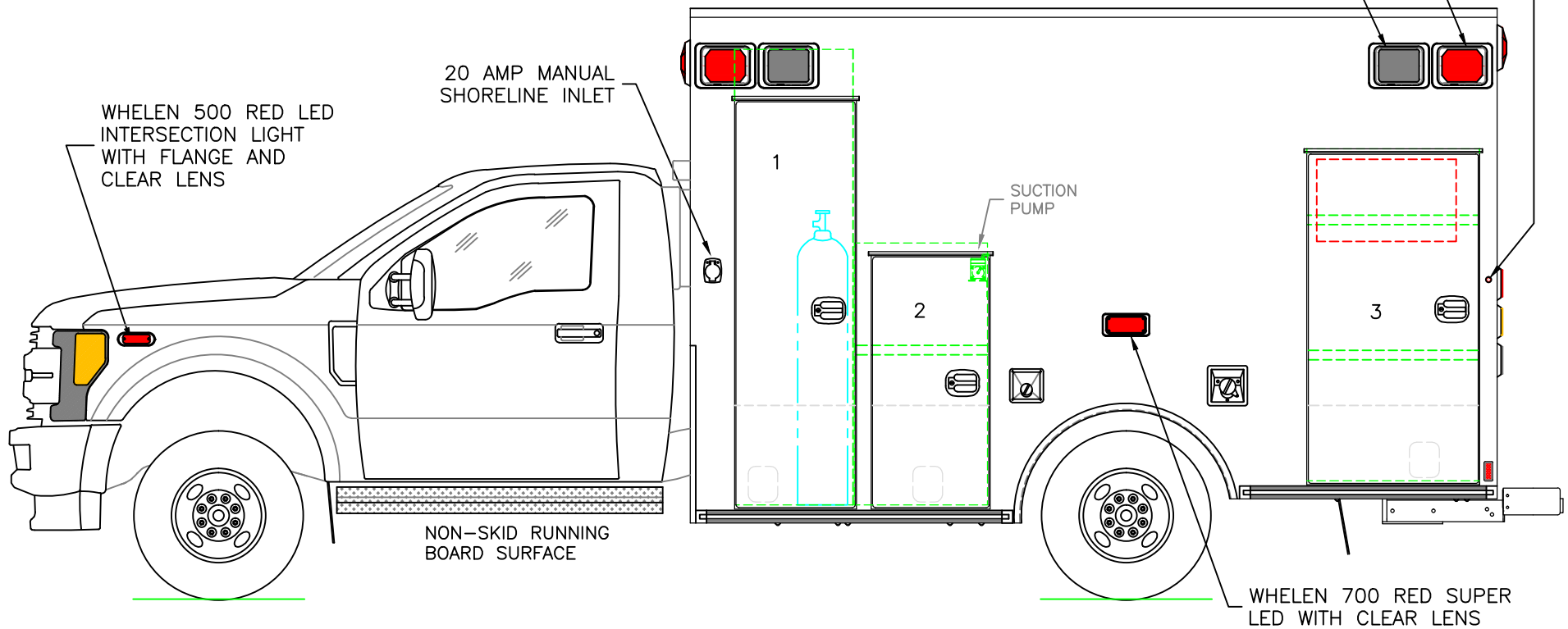
DIMENSIONS FOR OVERALL HEIGHT AND LENGTH ARE APPROXIMATE
 OVERALL HEIGHT = 109"
 OVERALL LENGTH = 288"
 MODULE LENGTH = 150"

NOTE: DEF FILL REMOVED IF
 GAS CHASSIS IS QUOTED.

TECNIQ S330 RED MINI-LED MARKER
 LIGHT TO ALSO FLASH WITH TURN SIGNAL

(2) WHELEN 900 RED SUPER LED
 WARNING LIGHTS WITH CLEAR LENSES

(2) WHELEN 900 24-DIODE LED SCENE LIGHTS



COMPARTMENT
 O.S.S #1

CLEAR OPENING: 74.50h x 18.50w
 INSIDE DIM'S.: 84.75h x 22.00w x 18.50d
 OXYGEN STORAGE COMPARTMENT

O.S.S #2

CLEAR OPENING: 45.50h x 19.00w
 INSIDE DIM'S.: 48.75h x 24.75w x 18.50d
 (1) ADJUSTABLE SHELF

O.S.S #3

CLEAR OPENING: 60.25h x 28.50w
 INSIDE DIM'S.: 61.75h x 32.00w x 18.50d
 (2) ADJUSTABLE SHELVES
 INSIDE/OUTSIDE ACCESS

THIS DRAWING IS FOR REPRESENTATIONAL PURPOSES ONLY. DETAILS ARE CONCEPTUAL AND ARE SUBJECT TO CHANGE DURING DESIGN AND CONSTRUCTION
 DIMENSIONS ARE APPROXIMATE UNLESS NOTED OTHERWISE TO MEET A SPECIFIC CUSTOMER NEED.

BRAUN
 EXPRESS PLUS



2020 STREETSIDE EXTERIOR VIEW
 EXPRESS PLUS / FORD F350 CHASSIS

DATE:
 02-14-20
 DWG. AAB
 REV. NR

DRAWING NO.
 EXPRESSPLUS-3

TECNIQ S330 RED MINI-LED MARKER LIGHT TO ALSO FLASH WITH TURN SIGNAL

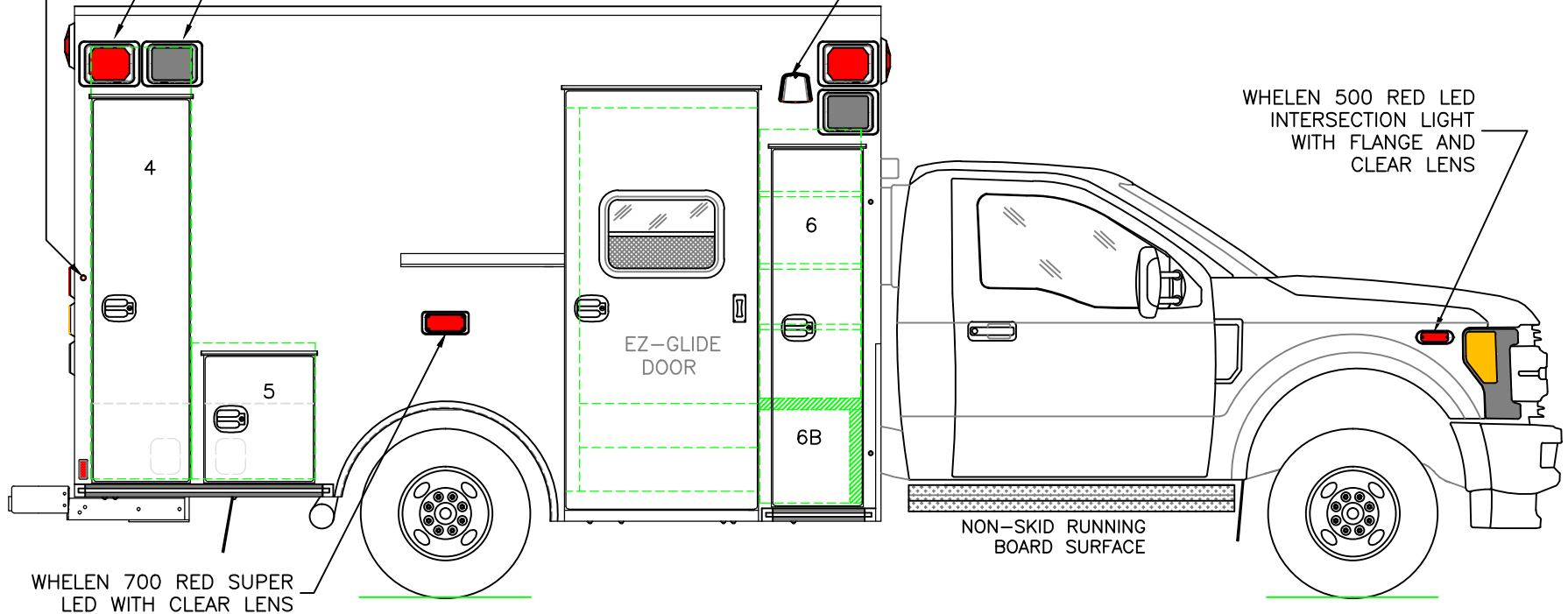
(2) WHELEN 900 RED SUPER LED WARNING LIGHTS WITH CLEAR LENSES

(2) WHELEN 900 24-DIODE LED SCENE LIGHTS

DIMENSIONS FOR OVERALL HEIGHT AND LENGTH ARE APPROXIMATE
 OVERALL HEIGHT = 109"
 OVERALL LENGTH = 288"
 MODULE LENGTH = 150"

EXHAUST VENT

WHELEN 500 RED LED INTERSECTION LIGHT WITH FLANGE AND CLEAR LENS



WHELEN 700 RED SUPER LED WITH CLEAR LENS

COMPARTMENT

O.S.S #4

CLEAR OPENING: 70.00h x 15.00w
 INSIDE DIM'S.: 80.25h x 18.50w x 18.50d
 BACKBOARD/SCOOP STORAGE

O.S.S #5

CLEAR OPENING: 22.25h x 17.00w
 INSIDE DIM'S.: 25.25h x 23.00w x 18.50d
 MISC. STORAGE COMPARTMENT

O.S.S #6

CLEAR OPENING: 65.25h x 13.50w
 INSIDE DIM'S. 6A: SEE PARTITION INTERIOR VIEW
 INSIDE/OUTSIDE STORAGE WITH (3) ADJUSTABLE SHELVES
 INSIDE DIM'S. 6B: 17.25h x 16.75w x 16.75d

THIS DRAWING IS FOR REPRESENTATIONAL PURPOSES ONLY. DETAILS ARE CONCEPTUAL AND ARE SUBJECT TO CHANGE DURING DESIGN AND CONSTRUCTION DIMENSIONS ARE APPROXIMATE UNLESS NOTED OTHERWISE TO MEET A SPECIFIC CUSTOMER NEED.

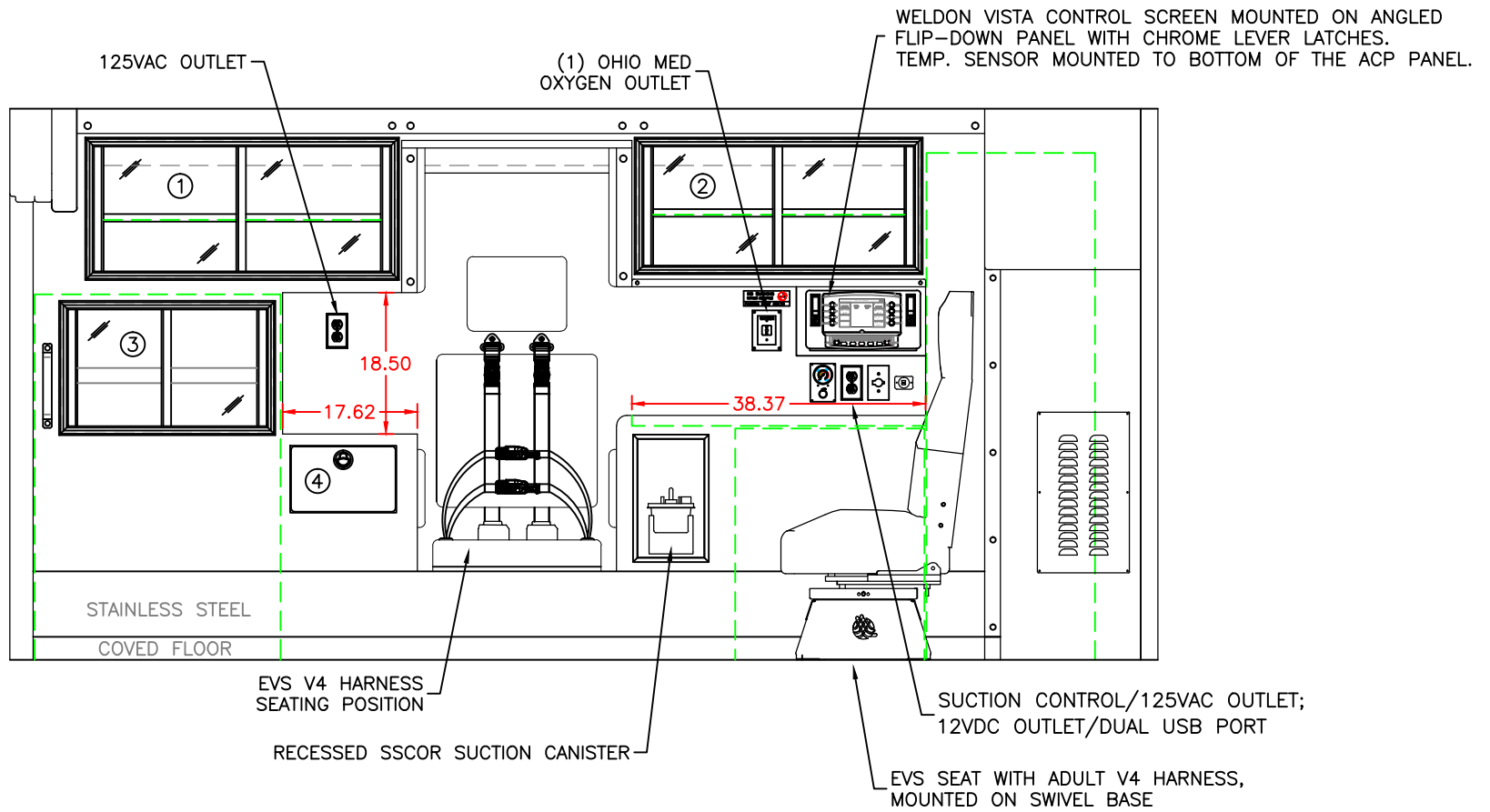
BRAUN
 EXPRESS PLUS



2020 CURBSIDE EXTERIOR VIEW
 EXPRESS PLUS / FORD F350 CHASSIS

DATE: 02-14-20	DWG. AAB	REV. NR
-------------------	-------------	------------

DRAWING NO.
 EXPRESSPLUS-4



COMPARTMENT

#1 DOOR OPENING: 16.25h x 38.50w
 INSIDE DIMS: 17.75h x 40.25w x 16.25d
 (1) ADJUSTABLE SHELF
 SLIDING POLYCARBONATE DOORS
 TOTAL CABINET WEIGHT RATING = 25 lbs.

#2 DOOR OPENING: 15.50h x 35.25w
 INSIDE DIMS: 17.00h x 36.75w x 16.25d
 (1) ADJUSTABLE SHELF
 SLIDING POLYCARBONATE DOORS
 TOTAL CABINET WEIGHT RATING = 25 lbs.

#3 DOOR OPENING: 15.25h x 26.00w
 INSIDE DIMS: OSS #3
 INSIDE/OUTSIDE ACCESS
 SLIDING POLYCARBONATE DOORS
 TOTAL CABINET WEIGHT RATING = 25 lbs.

#4 PULL-OUT DRAWER
 INSIDE DIMS: 7.50h x 11.75w x 15.75d
 LOCKING STAINLESS STEEL FLUSH PULL LATCH
 TOTAL DRAWER WEIGHT RATING = 10 lbs.

CABINETS TO BE ALUMINUM

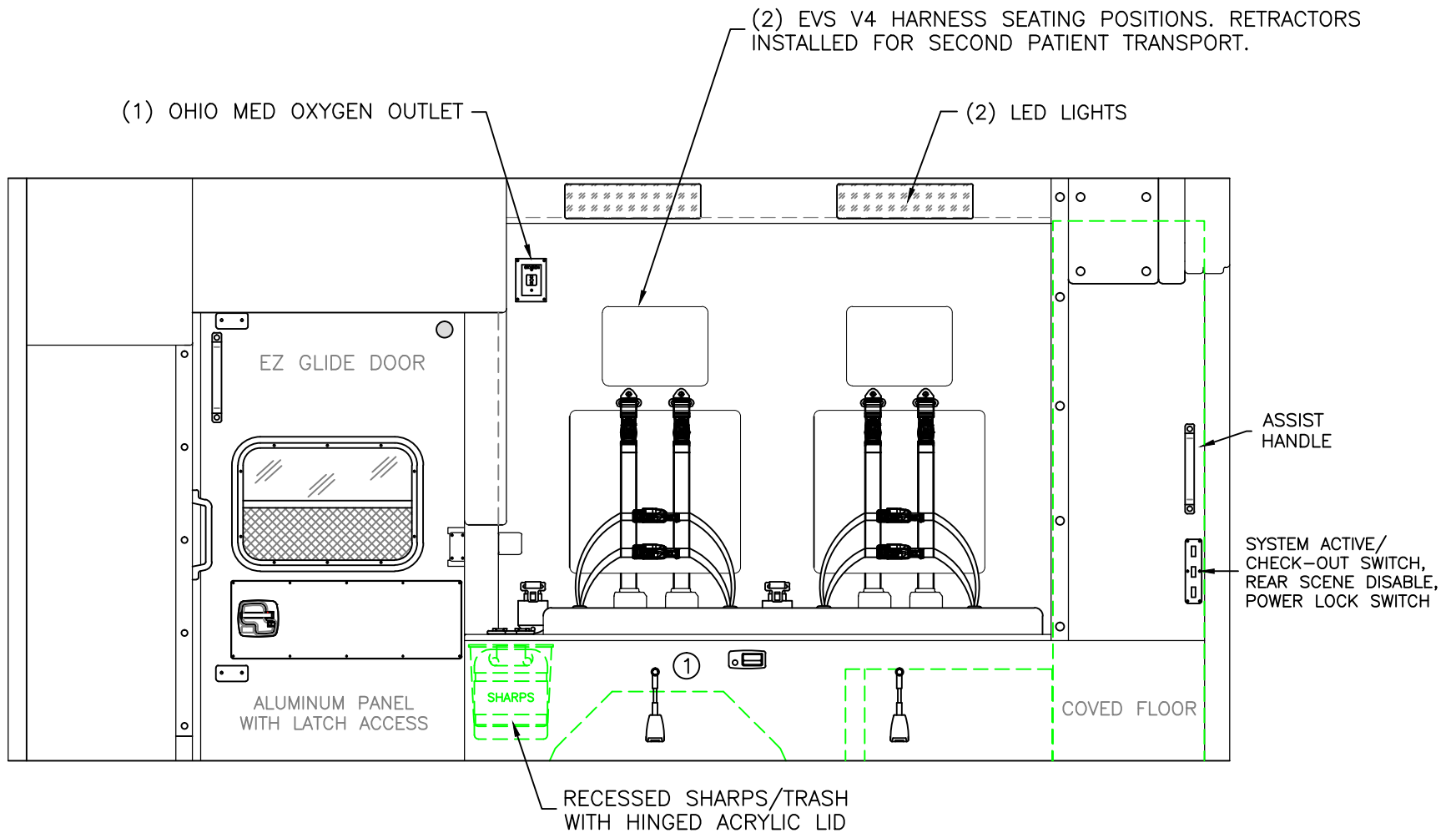
THIS DRAWING IS FOR REPRESENTATIONAL PURPOSES ONLY. DETAILS ARE CONCEPTUAL AND ARE SUBJECT TO CHANGE DURING DESIGN AND CONSTRUCTION DIMENSIONS ARE APPROXIMATE UNLESS NOTED OTHERWISE TO MEET A SPECIFIC CUSTOMER NEED.

BRAUN
 EXPRESS PLUS



2020 STREETSIDE INTERIOR VIEW
 EXPRESS PLUS

DATE: 02-14-20		DRAWING NO.	
DWG. AAB	REV. NR	EXPRESSPLUS-5	



#1 INSIDE DIM'S.: 14.50h x 46.00w x 18.75d

CABINETS TO BE ALUMINUM

THIS DRAWING IS FOR REPRESENTATIONAL PURPOSES ONLY. DETAILS ARE CONCEPTUAL AND ARE SUBJECT TO CHANGE DURING DESIGN AND CONSTRUCTION. DIMENSIONS ARE APPROXIMATE UNLESS NOTED OTHERWISE TO MEET A SPECIFIC CUSTOMER NEED.

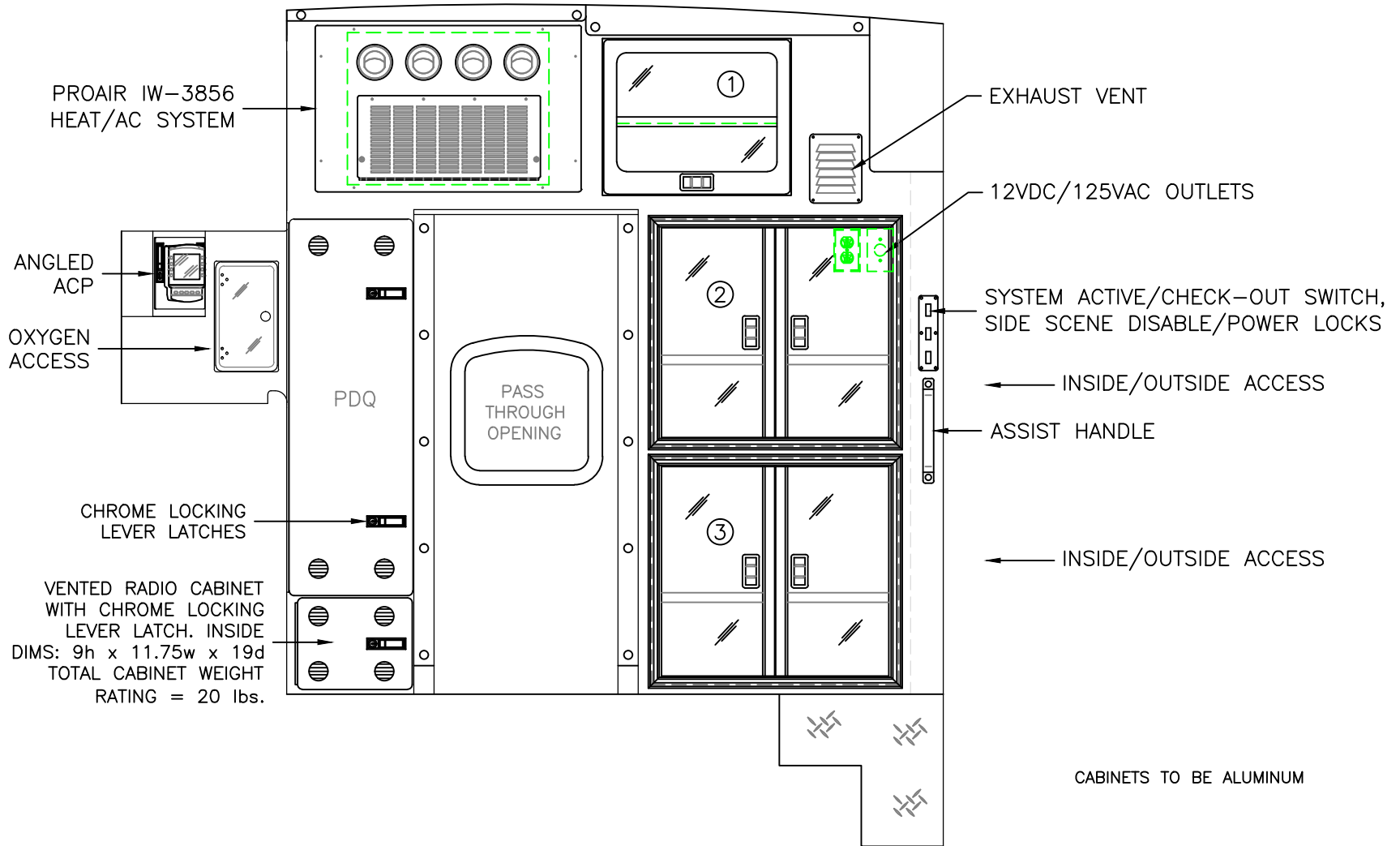
BRAUN
EXPRESS PLUS



2020 CURBSIDE INTERIOR VIEW
EXPRESS PLUS

DATE:
02-14-20
DWG. AAB
REV. NR

DRAWING NO.
EXPRESSPLUS-6



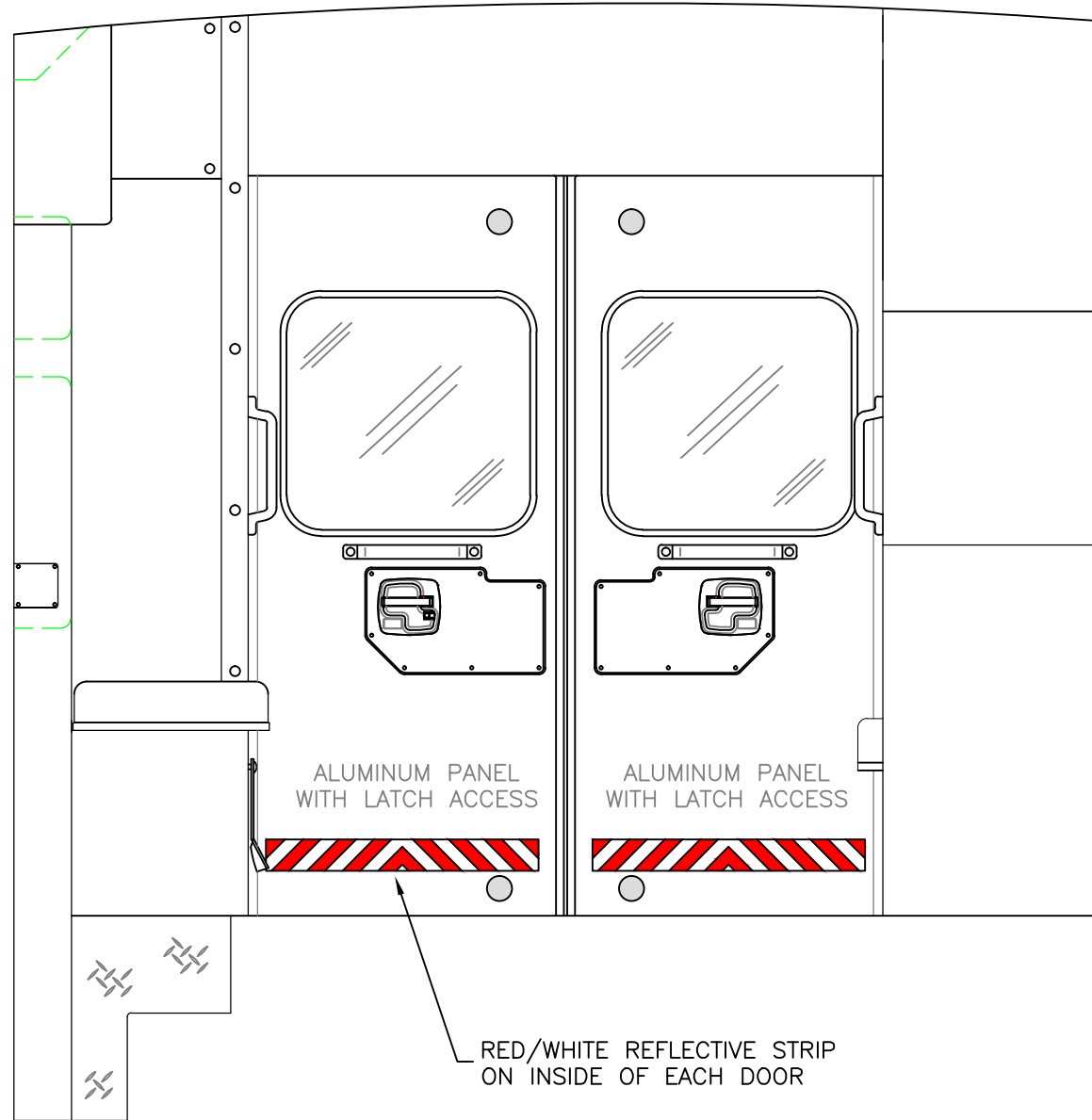
CABINETS TO BE ALUMINUM

COMPARTMENT

#1 DOOR OPENING: 16.50h x 20.00w
 INSIDE DIMS: 16.50h x 20.00w x 16.00d
 HINGED ALUMINUM DOOR WITH POLYCARBONATE INSERT
 CENTER SQUEEZE LATCH AND HOLD-OPENS
 (1) ADJUSTABLE SHELF
 TOTAL CABINET WEIGHT RATING = 25 lbs.

#2/#3 DOOR OPENING: 22.25h x 24.25w
 INSIDE DIMS: 24.00h x 30.25w x 17.75d
 HINGED POLYCARBONATE DOORS WITH FULL LENGTH
 HANDLES AND CENTER SQUEEZE LATCHES
 (1) ADJUSTABLE SHELF PER CABINET
 TOTAL CABINET WEIGHT RATING = 60 lbs. EACH

THIS DRAWING IS FOR REPRESENTATIONAL PURPOSES ONLY. DETAILS ARE CONCEPTUAL AND ARE SUBJECT TO CHANGE DURING DESIGN AND CONSTRUCTION
 DIMENSIONS ARE APPROXIMATE UNLESS NOTED OTHERWISE TO MEET A SPECIFIC CUSTOMER NEED.



THIS DRAWING IS FOR REPRESENTATIONAL PURPOSES ONLY. DETAILS ARE CONCEPTUAL AND ARE SUBJECT TO CHANGE DURING DESIGN AND CONSTRUCTION DIMENSIONS ARE APPROXIMATE UNLESS NOTED OTHERWISE TO MEET A SPECIFIC CUSTOMER NEED.

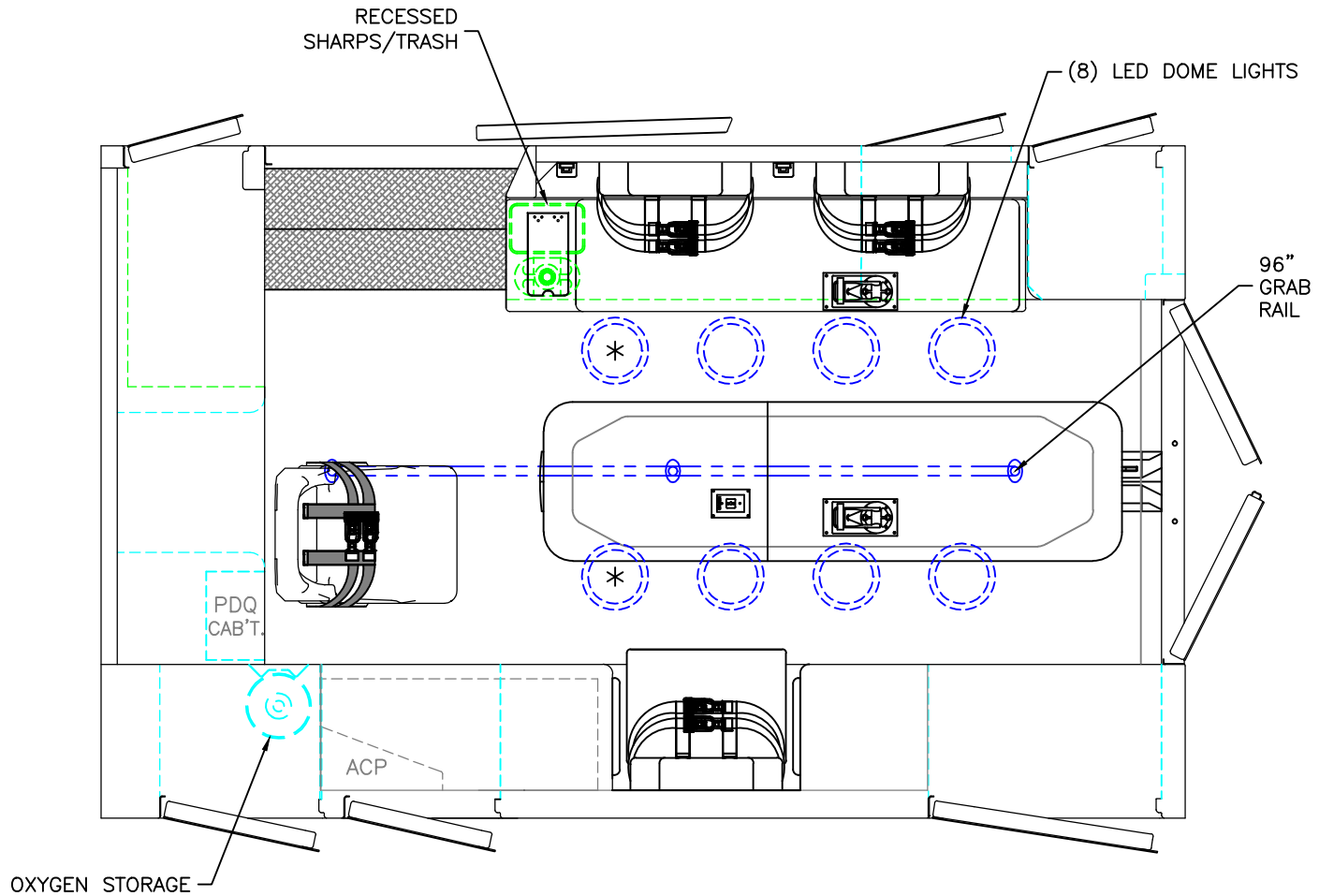
BRAUN
EXPRESS PLUS





2020 REAR INTERIOR VIEW
EXPRESS PLUS

DATE:	02-14-20
DWG.	REV.
AAB	NR

DRAWING NO.
EXPRESSPLUS-8



-  = (1) CEILING OXYGEN OUTLET
-  = (2) RECESSED CEILING IV HANGER LOCATIONS
- * (2) ANTENNA BASES LOCATED OUTBOARD OF DOME LIGHTS WITH COAX SERVICE LOOP
- 86" FERNO STAT-TRAC CENTER MOUNT COT HARDWARE

MODULE WIDTH = 93"
 MODULE LENGTH = 150"
 MODULE HEAD ROOM = 72"

THIS DRAWING IS FOR REPRESENTATIONAL PURPOSES ONLY. DETAILS ARE CONCEPTUAL AND ARE SUBJECT TO CHANGE DURING DESIGN AND CONSTRUCTION DIMENSIONS ARE APPROXIMATE UNLESS NOTED OTHERWISE TO MEET A SPECIFIC CUSTOMER NEED.

BRAUN
 EXPRESS PLUS



2020 FLOOR INTERIOR VIEW
 EXPRESS PLUS

DATE:
 02-14-20
 DWG.
 AAB

REV.
 NR

DRAWING NO.
 EXPRESSPLUS-9